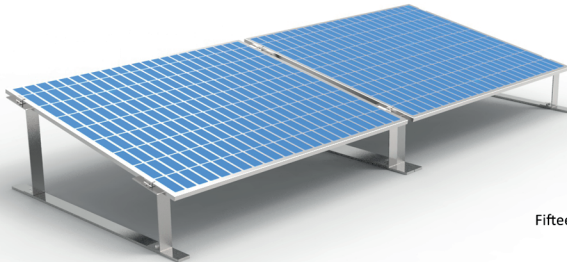


Perfect for raising panels above the live roof areas

Pre assembled framework.

Fast simple installation



Fifteen years warranty.

## Features & Benefits

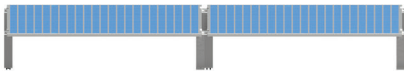
Solar Steel design manufacture specialist green roof support systems for both landscape and portrait PV panels . We can raise the panels to suitably clear the live vegetation thus avoiding any potential shading issues, The system is ballasted to protect the roof membrane and allow the green roof to easily grow in and around the structure.



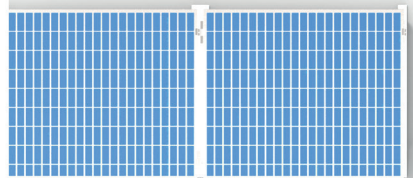
ISOMETRIC



SIDE



FRONT



PLAN